

Research on Scenario Reconstruction of Space in Old Community

Junxiang Si

School of Ethnology and Sociology, Yunnan University, Kunming, Yunnan, China, 650091

Abstract: *In the process of urban construction and development, the reconstruction of old community is always a difficult problem for urban renewal. In the process of reconstructing space of old community in cities, the relevant contents of scenario theory can be actively referred to. The paper analyzes the basic connotation of theory of scenes, the construction of current park city, space construction in old community and other profiles, and then analyzes the relevant ideas and specific design content of space reconstruction in old community from the theory of scenes, in combination with the specific cases of renovating old community.*

Keywords: *the construction of park city; old community; space; the theory of scenes; reconstruction*

1. Introduction

In recent years, with the continuous advancement of China's urbanization, the construction of park city has also increasingly received widespread attention. In this context, the active transformation and reconstruction of various old communities has also become an important way to enhance the level of urban construction and improve the quality of life of residents. Many complex theories and factors are involved in the process of park city construction, among which the theory of scenes is one of extremely important types of theory.

2. The theory of scenes and the construction of park city

At present, in many cities and regions, there are a large number of old communities. A large number of people live in these old communities, and in the process of reconstructing these old communities to improve the quality of life of people, the relevant contents of scenario theory can be actively referred to. The theory of scenes suggests that it can become a place to cultivate all kinds of spirits when a community becomes a scene. The theory of scenes emphasizes the aesthetic significance of a city as a spatial experience, and this territory-specific aesthetic and local cultural style contains connotations of landscape, experience, consumption, perception, symbolic meaning and values. A city is organic, and community planning itself is a process rich in life. The concept of "humanism" can be actively followed in the process of the specific reconstruction of community space. Communities in the future will emphasize the respect and understanding of people, emphasize the humanistic value of the community, seek the maximization and expression of public interest, explore the hidden clues of community growth such as the life form, community experience and livability behind the material form, and be full of humanistic care. In recent years, the construction of many park cities is actively based on the actual situation of the region, and carries out reasonable and exquisite transformation of various community spaces.^[1]

3. Case Study of Scenario reconstruction of space in old community

3.1 Case overview

In this study, Nanyuan Community in Jincheng Town, Lin'an District, is taken as a case study to analyze its problems of spatial scenario reconstruction. Built from 1988 to 1991, the whole community covers an area of 96.25 acres with 38 buildings and 111 floors, and its development company is Lin'an Real Estate Development Company. Currently, there are 1,244 households in Nanyuan Community of Jincheng Town, Lin'an District. Here is the overview schematic of Nanyuan Community of Jincheng Town, Lin'an District in Figure 1.



Figure 1: The overview schematic of Nanyuan Community of Jincheng Town, Lin'an District.

3.2 The current state of constructing space in community

In the current rapid mass construction of settlements, there is a general lack of community vitality, sense of place, and the ideal living world that people aspire to like a "home". At present, the space construction of Nanyuan Community of Jincheng Town, Lin'an District, in terms of space, has too much green area of the overall park and insufficient room for people's activities; especially there are a lot of mosquitoes and insects in the south of the park with many large trees and dark environment, so that it need to be urgently perfected and improved, upgraded. In Nanyuan Community, the overall effect of part of the material pavement is fairly good, it can be retained as appropriate. In the garden architecture, the promenades and pavilions in the park of Nanyuan Community, with powerful function and high use rate, can be appropriate to be retained. In terms of theme, the park theme is weak, the recognition is low and the attractive hot spots is scarce, so it needs to be improved and enhanced.

3.3 Design ideas of scenario reconstruction

From the perspective of scenario theory, certain methods and means can be comprehensively applied to carry out the necessary design and improvement of the community to improve the community environment and provide the public with a good living experience. In the specific design, certain cultural values and aesthetic interests can be integrated into the scene to give the scene different and diverse meanings, experiences and emotional resonance, and at the same time, it can also achieve the purpose of reconstructing people's cognition and behavior in the scene. ^[2]

This study is based on the theory of scenes and try to position Nanyuan Community of Jincheng Town, Lin'an District, as a friendly and intelligent future demonstration community in Hangzhou integrating "intelligent management, cultural cohesion, mutual assistance and friendliness". The specific design ideas are as follows: (1) The strategy of managing the community intelligently. The front-end service provider aims to use Internet technology to provide property management with the innovative services of the intelligent community platform, and then provide owners with more convenient, safer and smarter one-stop housekeeping services. (2) The strategy of cohering community by culture. The specific design chooses to design social community and art community. Among them, the vitality of social community refers to the interactive frequency, opportunity, and quality; high-quality public realm is provided to enhance the opportunities for residents to make contact; the walkability of the community is enhanced to increase the frequency of residents going out; and land is mixed-use to increase the opportunities for different types of contact. The "art community" transforms urban communities through art, rejuvenates them, becomes an organism that activates urban development, and becomes an effective art community that serves urban residents. (3) The strategy of mutual friendly community. In the specific design, different types of communities such as "gardening community", "walking community" and "volunteer community" are designed to meet people's various needs. For example, the construction of a "gardening community" can enhance the interest of community residents in gardening and horticultural therapy, and share their knowledge of gardening. In gardening competition, it can enhance the hands-on ability and creative ability of residents through gardening practice, and it can improve the friendly interaction between residents through mutual help and display sessions. ^[3]

3.4 Design plan of scenario reconstruction

3.4.1 Overall design

Community is the first meeting hall of the city, from the perspective of the theory of scenes , on the basis of the original scenario design of the community, it is necessary to optimize and improve the design in the process of scenario reconstruction of Nanyuan Community, and the final overall design schematic is shown in Figure 2.

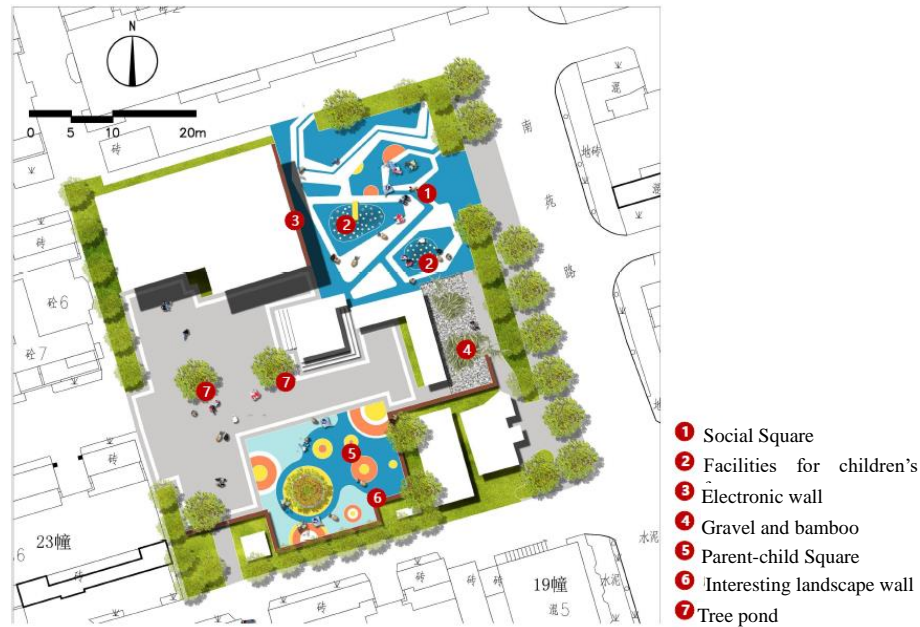


Figure 2: The schematic of the overall design of scenario reconstruction in Nanyuan Community, Jincheng Town, Lin'an District.

3.4.2 Zoning design

In the process of scenario reconstruction in Nanyuan Community, the whole community, combined with the needs of people's daily life, leisure, entertainment and other aspects, is reasonably divided into different areas for the corresponding design, divided into different blocks such as social square and parent-child square, and other different blocks, the specific zoning design is shown in Figure 3.

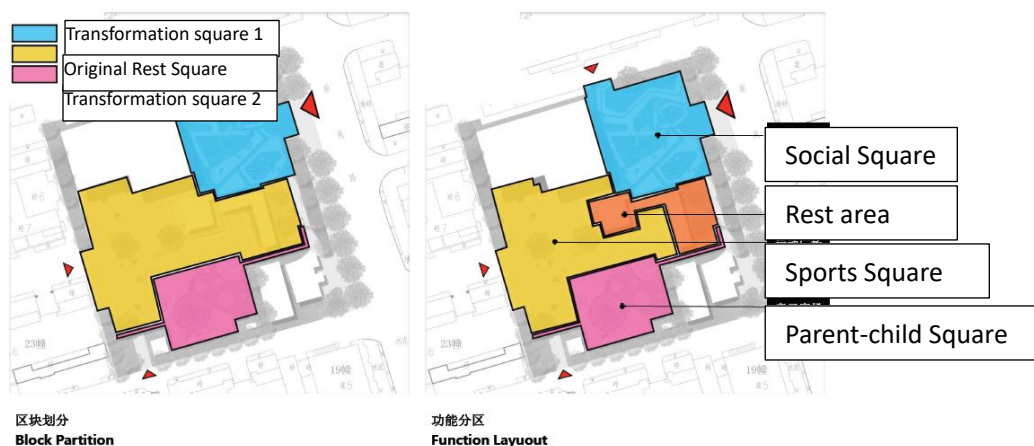


Figure 3: Design of functional zoning for scenario reconstruction in Nanyuan Community, Jincheng Town, Lin'an District.

(1) Social Square. Modern, simple, smooth and bright lines is adopted to open up the originally closed green space and to create a unique and energetic activity square, so as to form a unique, vibrant and highly recognizable space; the electronic wall on the west side of the square can be used for information dissemination and publicity, and it can also be used to play music and films at night,

attracting more people and enhancing the vitality of the venue. The daily functions of this social square are very rich, and it can accomplish a variety of activities such as party building propaganda, community public welfare activities, community cultural activities, outdoor performances, and community bazaars. ^[4]

(2) Parent-child Square. The square uses landscape walls to separate and re-organize space, so that the garden space is layered, rich in change. In terms of specific functions, it mainly includes interesting landscape walls, children's activities, community square, community fitness and so on. At the same time, the walls themselves have strong functionality and landscape character, adding vitality and attractiveness of the site. Interesting landscape walls contain a variety of types, such as sports wall, graffiti wall, publicity wall, height measurement wall and so on. Different types of interesting landscape walls have different functions, which can well meet the actual needs of different types of people in the community. For example, children can measure their height in the height measurement wall, and at the same time they can learn about animal height, which is entertaining and educational. The sports wall is divided into two parts: children's rock climbing and children's basketball shooting. The wall is equipped with shooting frames and rock climbing points for children's sports experience, which enhances children's physical fitness and develops children's confidence. ^[5]

3.4.3 Lighting and Furniture Design

Lighting design is a very important element in scene design. In the process of scenario reconstruction in this community, the design of garden lights and lawn lights is carried out in combination with the community profile and the design concept, and local lighting is used to enhance the atmosphere and the combination of the lighting effect is also changing as the change of the lighting angles. The schematic of the lighting layout is shown in Figure 4.

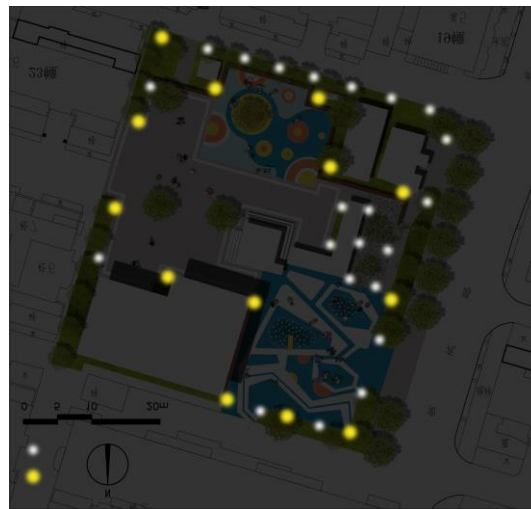


Figure 4: The schematic of lighting arrangement for scenario reconstruction in Nanyuan Community, Jincheng Town, Lin'an District.

In terms of furniture design, standard seats and fun seats are designed by comprehensively considering the needs of people's daily leisure and activities. Among them, standard seats are characterized by safety and durability, which can provide a resting place for community residents and meet people's needs for rest. While the various fun seats are more vivid and lively, apart from the basic seat functions, they can also increase the interest of the community environment and bring people a good visual experience. The design of various types of seats not only brings a comfortable rest experience to residents of community, but also collects people's expectations for a convenient and comfortable life. The service function is emphasized in the road sections where life and residence are concentrated, rational layout and convenient function are focused on, and multifunctional leisure seats are added. It can be seen in Figure 5 for a schematic of furniture arrangement:

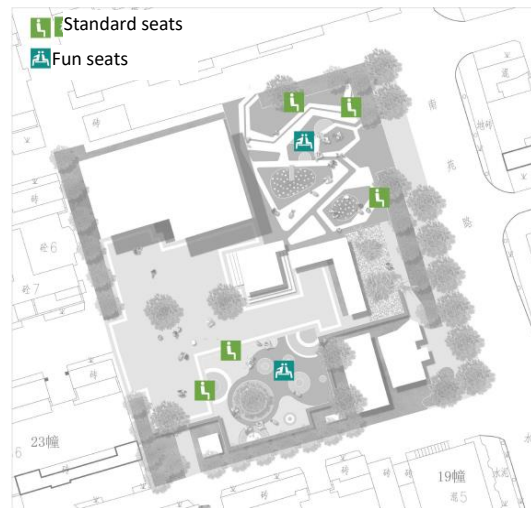


Figure 5: The schematic of furniture arrangement for scenario reconstruction in Nanyuan Community, Jincheng Town, Lin'an District.

3.4.4 Art installation and community walkway design

Combined with the actual situation of Nanyuan Community, certain art installation design has been carried out. Previously, the overall design of this community was traditional and single, and art character was not strong. In order to integrate more artistic elements into the community construction, attract people to go outdoors more, and bring people a more ideal embodiment of living, entertainment and leisure, some art installations are designed in the community in this reconstruction design, so that the art is more close to the residents, and more integrated with the community. In the appropriate location of the community, the arrangement of certain art installations can be a good embellishment of the community environment, enhance the artistic nature of the community. In the process of designing the material pavement of the community, by analyzing that the actual situation that the overall effect of some material pavement in Nanyuan Community in the past is fairly good, the pavement is chosen to be retained as appropriate when carrying out the transformation. From the perspective of scenario theory, targeted transformation design is chosen to be carried out for the community, in combination with its original material pavement situation. In terms of pavement, for the problem that the previous paving is relatively single and simple, color asphalt paint and black and white gravel paving are adopted synthetically, in order to increase the overall paving of interest and art. In addition, the attempt of the necessary innovative design is carried out in term of the promenade of the community, to make it as a new place for community residents' leisure and fitness. People can take a sweaty jogging in front of their home, everywhere they look they see all the pleasing landscape, as well as like-minded friends, walking old couple, lively and lovely children. In the style of walking path, we choose to use colored asphalt paint design, to create a set of colorful health trail with functions and beauty. The colored asphalt used is safe, environmentally friendly, and helps protect the joints of people who run, walk, and do other types of sports. In order to meet the different needs of the crowd, the starting line and sports mileage marks are added in the runway area, then the trail has both diversion and calculation of mileage of the dual function. At the same time, certain luminous materials are reasonably used to design a strolling path with novel and unique night effect. ^[6]

4. Conclusion

To sum up, in the process of transforming old community, we can actively refer to the relevant contents of scenario theory and carry out reasonable transformation and design by combining the characteristics of different communities and synthesizing people's multifaceted needs, in order to better enhance the effect of scenario construction in community and improve the quality of people's lives.

References

[1] Zeng xin, Wu Xiao, Zhao Chunlan. *Research on the Renewal Strategy for Public Space in Old Community Based on Collective Memory and Place Theory: Taking Xin-er Village and Qingxian*

Village area in Chengdu as a Case Study[J]. *Community Design*,2023(2):43-54.

[2] Zhang Ximmeng, Bai Jieran. *Local Application of Place Theory in Ageing Renewal of Old Community--Taking Ping'an Road Community of Xinglong Road as a Case Study*[J]. *Beauty & Times*,2023(8):55-57.

[3] Yang Lihua,Wang Yun. *Landscape Assessment on Old Residential Outdoor Space Retrofit from the Scenes Theory: A Study in "Beautiful Homes" Projects of Shanghai Minhang*[J]. *Architecture & Culture*,2022(8):165-168.

[4] Wang Jinbai, Chang Haixing. *Research on the 'Scene-oriented' Design Strategy of Age-friendly Communities: A Case Study of Reconstruction Design of a Community in a City in Central China*[J]. *Shanghai Urban Planning Review*,2021(1):38-44.

[5] Liu Haijian. *Emotional Governance of Old Neighborhoods: Practice Patterns, Application Limits and Optimization Strategies - An Examination Based on Three Types of Governance Scenarios in M community*[J]. *The Journal of Yunnan Administration College*,2023,25(1):60-71.

[6] Wang Guanghui,He Ying. *Renovation of Old Residential Areas in the Context of Future Community Construction—Case Study on renovation of old residential areas(Future Community Construction)of Cuiyuan Yiqu in Hangzhou*[J]. *Construction Science and Technology*,2023(6):35-38.