

# Application and Analysis of Non-Heritage Culture in Art Education in Colleges and Universities under the Background of Public Health Emergency

Jia Wang\*, Yi Chen

*School of Architectural Decoration and Art Design, Jiangsu Vocational College of Electronics and Information, Huaian, 223000, China*

*\*Corresponding author*

**Abstract:** *In the current situation of network university education, it is far from enough to improve students' learning ability. Sudden health problems often occur. While carrying out teaching, colleges and universities can integrate non-heritage culture and art into their study and life. Using reasonable activity display and professional non-legacy courses to carry out individual health awareness education can effectively prevent unexpected health problems in group health, while carrying out non-legacy art education, using emergency management methods, health concept model methods, non-legacy course training methods, total benefit index model, CRM reconstruction model, etc. Better teaching applications: (1) CRM reconstruction model uses the process of generating relevant non-legacy data features to identify the structure of cultural emotions, which is of great benefit to the subsequent generation of discriminant networks. (2) Share the parameters of the total benefit index model, which is convenient for feature extraction and the operation of the processing object in different positions, and information acquisition is of great help to the subsequent teaching content design. (3) With the help of non-legacy curriculum training method, sudden disease management method and health concept model law, all kinds of non-legacy activities can more scientifically and intuitively present the changes of individual health concept health value and sudden disease morbidity in demonstration.*

**Keywords:** *public health; non-heritage culture; art education; application analysis*

## 1. Introduction

Invasive candidiasis was the main cause of the increase in mortality rate at that time, and data from the National Center for Health Statistics reviewed the epidemiology of IC. Associated mortality rate remained stable, whereas invasive aspergillosis associated mortality rate continued to decline [1]. Available time-series studies have examined the health effects of black carbon, ozone and sulfate, providing estimates of the effects of long-term elemental carbon exposure on mortality rate and evidence of ozone effects on mortality rate. The interaction of related toxic substances and ozone has a significant impact on global warming [2]. Latent TB infection is controversial due to the risk of hepatotoxicity, and new diagnostic criteria and patient selection will change. The primary outcome measure of patients managed by current guidelines and practice standards shows hepatotoxic effects [3]. The Centers for Disease Control and Prevention was designated as the project leader to help conduct civilian biodefense work procedures in specific areas [4]. Interviews with Asian students suggest that they are not a group culture and that students of different languages and cultures should be adjusted [5]. South Africa's Ministry of Arts and Culture recently released the White Paper on Heritage for consultation, which contains a new vision of arts and culture, aiming to replace the White Paper on Arts, Culture and Heritage. However, the unpopularity of the revised White Paper on Cultural Affairs has highlighted some problems [6]. Rural landscape change drives the economic hot spot of rural land use, and the resistance to cultural shock has not been paid attention to. The employment status of farmers shows the importance of culture in agricultural landscape culture, and supports the landscape protection and development of agricultural heritage sites to maintain the stability of traditional landscape [7]. Familiarize yourself with conceptual issues related to cultural or heritage tourism and learn more about heritage sites to recreate important historical moments. It is the lofty ideal of the international community to promote the construction of a harmonious, beautiful, harmonious and prosperous world, and to promote civilization to solve the problem of cultural diversity and coexistence [8]. ICTs are integrated into the education system at more and more levels. As the main body of innovative critical

thinking, teachers of visual art education should use information technology to express themselves creatively through simulation. Model techniques and predictive models are used to explain and predict the direction of use [9]. The purpose of applying the concept of knowledge management to art education is to study the types and sources of knowledge in art education. The process and influence are analyzed by illustrative cases, and the authoritative source is embodied in the field observation of art education [10]. Fine arts educators accept ethical norms in solving environmental problems, but they will avoid the complex knowledge "pool" generated in fine arts education research. We can continue to discuss how to solve the problem of sustainable development of art education, criticize the post-structuralist strategy of art education, and improve the method of visual culture education [11]. A similar amount of shortening was observed in the buffer by molecules on a carbon matrix at different temperatures, with most of the shortening located between two positions of the tail for proteolysis, resulting in two strands that differ in appearance from the other regions [12]. Four kinds of propulsion actuators are improved, which can be applied to linear switched reluctance motor, and four kinds of horizontal propulsion actuators are applied to vertical elevator. The same static force distribution can be compared with the dynamic control simulation configuration of the stator, and the payload capability configuration is easier to realize in the experimental prototype [13].

## 2. Healthy Decision-making for the Development

It is required to teach public basic courses in strict accordance with the relevant provisions of the state, especially pointing out that higher vocational colleges limit Chinese excellent traditional culture, Chinese, foreign languages, aesthetic education courses and professional quality to compulsory or elective courses. Deepening the reform of sports aesthetic education, promoting students' physical and mental health, and improving students' aesthetic and humanistic qualities. We should strengthen the construction of public basic compulsory courses and promote the all-round development of students. Humanities and arts courses contain rich ideological and political elements, which are good carriers for teachers to carry out "ideological and political courses". For example, in the course of appreciation of music and art works, we can guide students to love Chinese traditional culture and stimulate their patriotic feelings by combining the historical background of the works and the author's personal situation. In view of the current situation, the process of artistic activities and healthy development is shown in Figure 1.

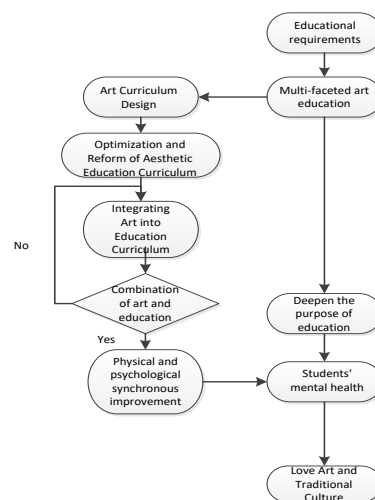


Figure 1: Process of artistic activities and healthy development

## 3. Classified collection of non-heritage cultural data

In view of the teaching effect requirements of non-legacy colleges, we have established a full benefit index model, analyzed the specific characteristics of various non-legacy colleges, and collected the existing production index data and other statistics. The comprehensive benefit index model is connected with the equivalent data value of the input non-tangible object, and the calculation result is used as the symbol value  $C_i$  of the approximate objective function. The second weight decay term in

the cost function is to reduce the weight amplitude  $w_{ij}$  to prevent network overfitting. The collection of specific benefit indicators is as follows:

$$E(v, h) = -\sum_{i=1}^n \sum_{j=1}^m w_{ij} h_i v_j - \sum_{j=1}^m c_j h_j, i \in \{1, \dots, n\}, j \in \{1, \dots, m\} \tag{1}$$

The environmental value of a specific intangible is not fixed and can be modified according to the requirements of preservation and manufacturing processes. The environmental factor  $i$  can also be set as the conditional output term  $v_i^2$ , with many variations. To forecast the maturity of a process growth metric:

$$E(v, h) = \frac{1}{2} \sum_{i=1}^n v_i^2 - \sum_{i=1}^n \sum_{j=1}^m w_{ij} - \sum_{j=1}^m b_j h_j, i \in \{1, \dots, n\}, j \in \{1, \dots, m\} \tag{2}$$

Invisible taxonomy is a back-propagation algorithm. Firstly, the algorithm carries out forward propagation analysis based on the standard cultural emotion quasi-term value, calculates the classification activation value  $\theta$  and the label calculation residual value  $v$ , and sets the weight value and the offset value  $e^{-E(v, h)}$ .

#### 4. Health Education of Intangible Cultural Heritage

##### 4.1 Art Education under the Background of Campus Health

To develop art education in colleges and universities under the background of campus health, we should first establish and improve the evaluation index system of campus planning to provide a scientific basis for the construction of a sound campus. The research on healthy campus planning is also in the exploratory stage, and the evaluation system of healthy campus planning has not yet been established. Therefore, it is of great significance and value to establish and improve the evaluation index system of campus planning to guide and improve campus construction. Based on the health impact assessment index system under health guidance and related campus planning evaluation index system, this paper explores the health impact assessment system suitable for campus planning, and provides guidance and reference standards for the sustainable development and promotion of healthy campus construction. The dietary health standard is to carry out educational activities related to food art. The health problems of obese public groups can be solved through light art food appreciation activities. The list of art food related to self-cultivation and nourishment is set up for the fatigue-prone public student groups to educate and solve health problems. Art education in colleges and universities is related to the health of public student groups, and art education improves the health of public groups at the same time. The health effects of five kinds of art meals on individual health indicators of public student groups are shown in Figure 2 below:

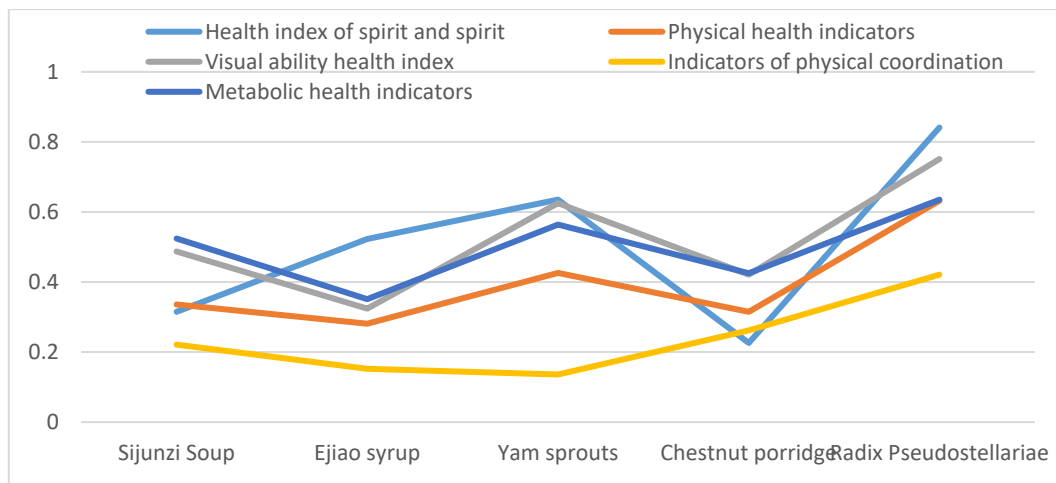


Figure 2: Health impact of artistic dishes on individual health indicators of public student groups

Unhealthy lifestyle and working environment cause high mental stress and high incidence of various chronic diseases among college students. A healthy campus program can reduce air pollution by designing artistic green display, and increase sports promotion courses for daily learning. Training content can be formulated with the increase of art and sports activities. The reason for setting up rhythmic gymnastics courses is to train students' movements and enhance their endurance. Force. Changes in students' personal health are shown in Figure 3:

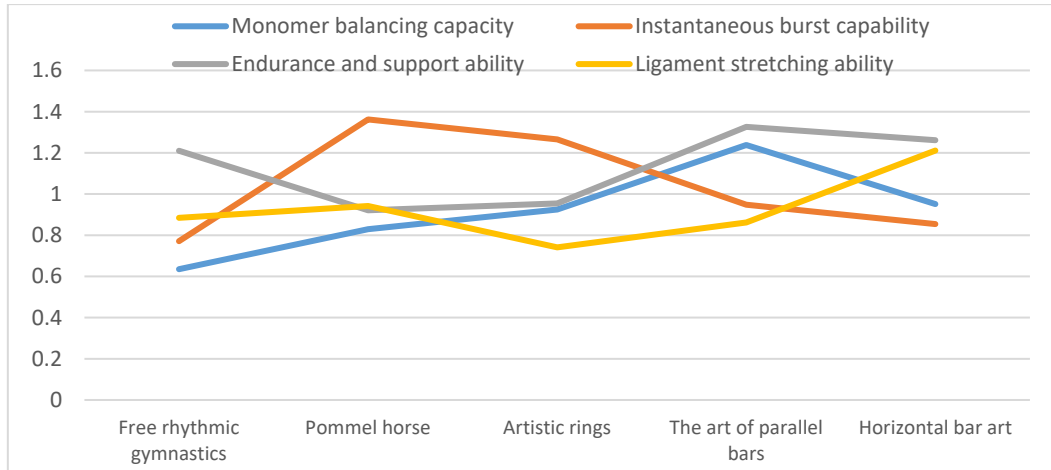


Figure 3: Effect of artistic gymnastics course on students' health indexes

The health protection under art education needs to improve the air quality and strengthen the interaction between teachers and students by designing teaching green space and open space in Colleges and universities. The construction of healthy campus index system can combine the theory of healthy university planning with the development of public health. University programs benefit public health, which in turn affects the lifestyle and behavior of public students. Planning and green space design can directly and indirectly avoid NCDs and other adverse health and environmental impacts. It is emphasized that rational planning design and infrastructure have an important impact on the realization of university health. Popularize student commuting movement among public groups to achieve public health. The stage health test and training method records the change of health hardware caused by the change of site conditions. It emphasizes that unreasonable planning and design methods of colleges and universities will lead to the high incidence of chronic diseases or the formation of unhealthy lifestyles. In order to arrange the site planning of health projects and reflect the health status of students, the changes of public health construction in colleges and universities are divided into five stages to record, as shown in Figure 4:

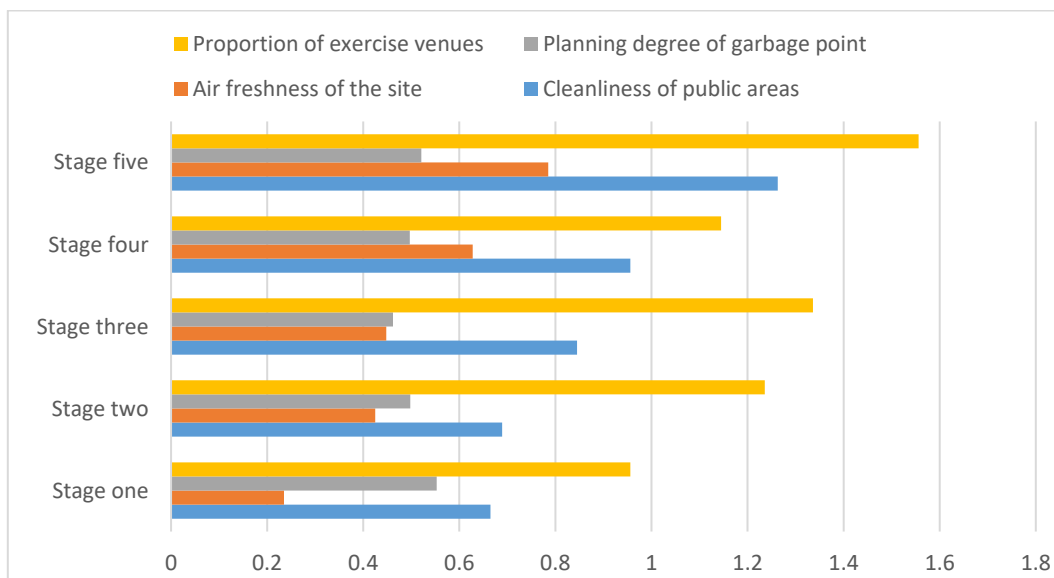


Figure 4: Health change of student group in health project occasion planning

#### 4.2 College education of non-heritage culture and art

The research on non-heritage culture and art education has changed from traditional one-way teaching and communication to offline interactive art education. There are 25 multiple choice questions in the questionnaire of college students' group survey activities, which set up a series of questions from the background of college group art education to the change of psychological activities of visiting non-heritage exhibitions.

The changes in students' understanding and experience brought about by the training methods of non-legacy courses, as well as the effects of teaching indicators brought about by non-legacy courses, are shown in Figure 5 below:

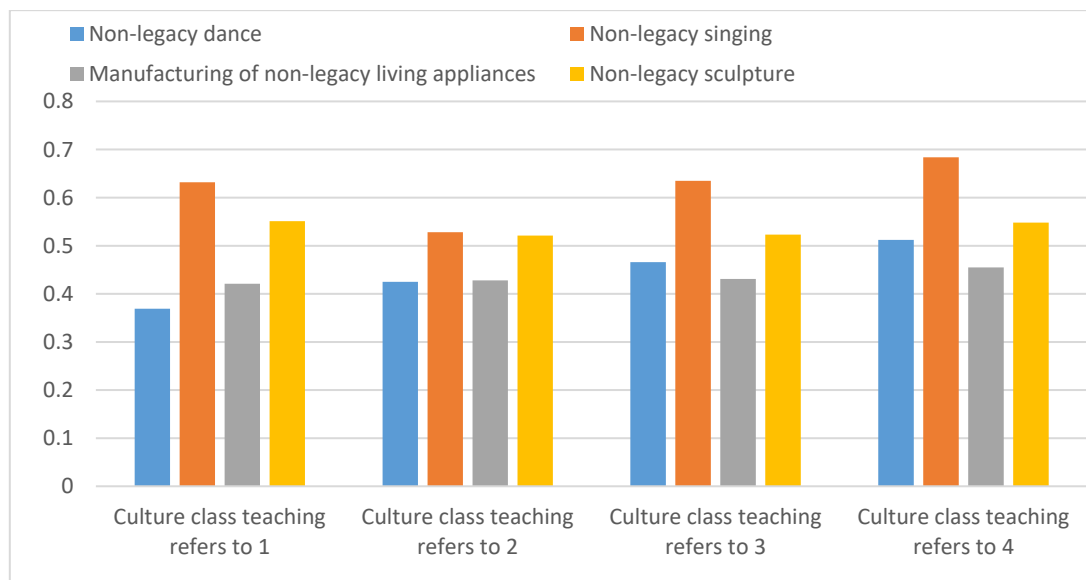


Figure 5: Students' understanding of non-heritage culture at different stages of education index

#### 4.3 Intangible Cultural Heritage Education under Sudden Health Problems

The outbreak of public health emergency has disrupted the original health system arrangement, and the health safety of citizens, social public health and national public health order are in a state of disorder and uncertainty. The reality of natural and social environmental risks prompts people to reflect on the drawbacks of the traditional economic development model, emphasizing the dependence and relevance of globalization, which also provides an opportunity for the expansion of threats to public health.

The application of intangible cultural education provides a better solution for sudden health problems. According to the geographical scope of public health emergency risk, public health emergency risk can be divided into global risk, regional risk, national or regional risk. The unpredictability of public health emergency and public health emergency that lead a country or region into public health risk often increases the public health risk of a country or region. Citizens accustomed to a peaceful environment cannot imagine the impact of public health emergency, and governments accustomed to a conventional environment cannot cope with public health emergency freely, but they must accept that this is the inevitable result of a public health risk society. The prevalence of cholera fever in European societies has led to the establishment of public health by forcing people to focus on water, food and sanitation conditions. The method of establishing the health concept model is to index the health behavior activities and record the changes of personal health concept and health values caused by various intangible cultural activities in the model, as shown in Figure 6 below:

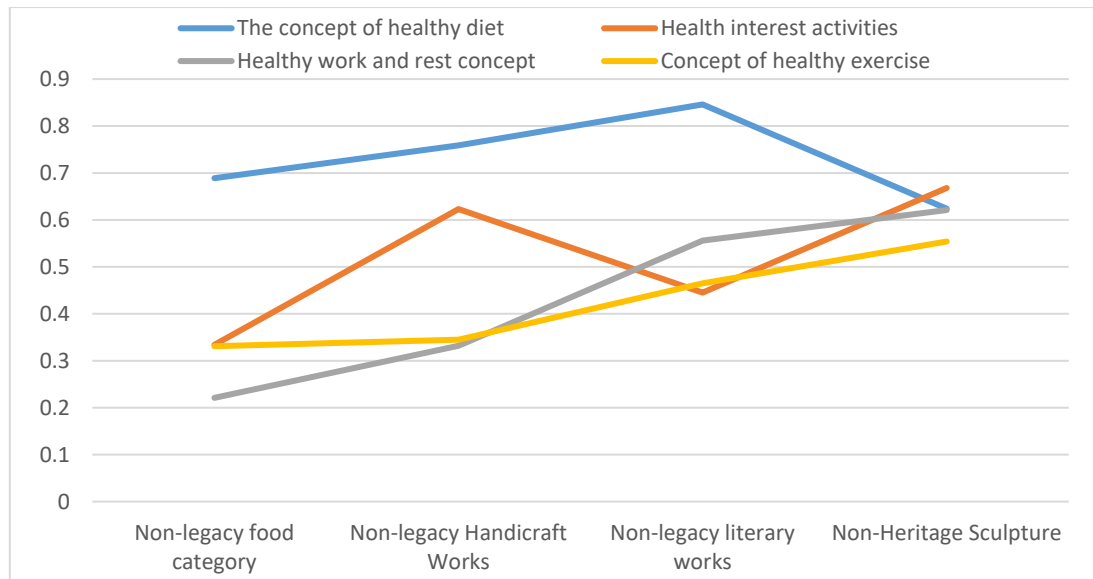


Figure 6: Changes of individual health concept and health value under various non-heritage cultural activities

## 5. Conclusion

Normal school education is effective in improving students' performance, but this conventional way of education will only improve test scores. While facing the teaching achievements and tasks of colleges and universities, intangible culture and art can be reasonably arranged in the teaching mode. Use the well-functioning education system to carry out non-legacy carrier education, while carrying out non-legacy activities, explore the healthy life skills and good habits behind it. The health status of individual students has a great impact on the whole public group, and their strong learning ability ensures the effective dissemination and understanding of positive living habits and health concepts. This goes a long way in preventing sudden health problems. Public health emergency are mainly concentrated in three aspects: epidemic and transmission of diseases, environmental pollution and food poisoning. The education of non-legacy activities should be carried out perfectly, and the sudden existence of health problems should be directly solved in all steps of the inheritance and understanding of knowledge and good habits.

## Acknowledgement

Funding Statement: There is no specific funding to support this research.

## References

- [1] Pfaller M A, Diekema D J. *Epidemiology of Invasive Candidiasis: a Persistent Public Health Problem [J]. Clinical Microbiology Reviews*, 2007, 20(1):133-163.
- [2] Smith K R, Jerrett M, Anderson H R. *Public health benefits of strategies to reduce greenhouse-gas emissions: health implications of short-lived greenhouse pollutants[J]. The Lancet*, 2009, 374(9707): 2091-2103.
- [3] Nolan C M, Goldberg S V, Buskin S E. *Hepatotoxicity Associated With Isoniazid Preventive Therapy: A 7-Year Survey From a Public Health Tuberculosis Clinic [J]. Jama*, 1999, 281(11): 1014-1018.
- [4] Rotz L D. *Public Health Assessment of Potential Biological Terrorism Agents [J]. Emerging Infectious Diseases*, 2002, 8(2):225-30.
- [5] Meggitt P, Tourkey A, Singh P. *Stereotypes and strategies: Confucian culture heritage learners - their learning styles and support needs\ n Implications for universities, TAFE and ACE providers[J]. Australian Journal of Adult & Community Education*, 1995, 35(1):69-73.
- [6] Graan M V. *Oratio. A Non-Lawyer's Views on the Revised White Paper on Arts, Culture and Heritage of 2013 [J]. Potchefstroom Electronic Law Journal/Potchefstroomse Elektroniese Regsblad*, 2017, 16(3):22-22.

- [7] Zhang Y, Min Q, Zhang C. *Traditional culture as an important power for maintaining agricultural landscapes in cultural heritage sites: A case study of the Hani terraces [J]. Journal of Cultural* 2016, 25:170-179.
- [8] Lang Y. *The Eco-consciousness in Chinese Traditional Culture [J]. Procedia—Social and Behavioral Sciences*, 2010, 2(5):6792-6795.
- [9] Rahmat M K, Au W K. *Visual Art Education Teachers' Continuance Intention to Integrate ICT: A Model Development [J]. Procedia—Social and Behavioral Sciences*, 2013, 90(1):356-364.
- [10] Chua A, Heng S K. *A knowledge management perspective on Art Education [J]. International Journal of Information Management*, 2010, 30(4):326-334.
- [11] Illeris H. *Nordic contemporary art education and the environment: Constructing an epistemological platform for Art Education for Sustainable Development (AESD) [J]. InFormation - Nordic Journal of Art and Research*, 2012, 1(2):1-1.
- [12] Hino Y. *Reciprocal Assistance of Art Education and Art Therapy (II): A Study on the Imagination for Living [J]. Journal of Molecular Biology*, 1986, 192(3):661-667.
- [13] Lobo N S, Hong S L, Krishnan R. *Comparison of Linear Switched Reluctance Machines for Vertical Propulsion Application: Analysis, Design, and Experimental Correlation [J]. IEEE Transactions on Industry Applications*, 2008, 44(4):1134-1142.